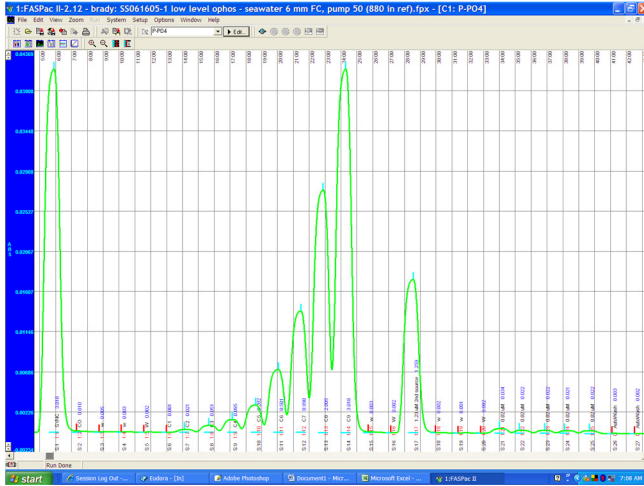


Ortho-Phosphate in Seawater/Brackishwater

Example 1 - Range: 0.02 - 3 μM (0.62 - 93 $\mu\text{g/L}$)



Ortho-Phosphate A205-A00
Range: 0.02 - 3 μM (as P)
MDL=0.0012 μM (as P)
Analysis rate: 42 samples/hour

Example 2 - Here are 0.02 and 0.05 μM peaks magnified:

