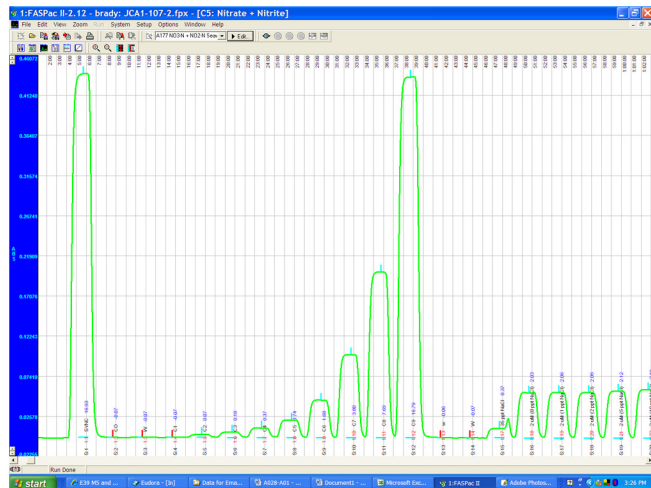


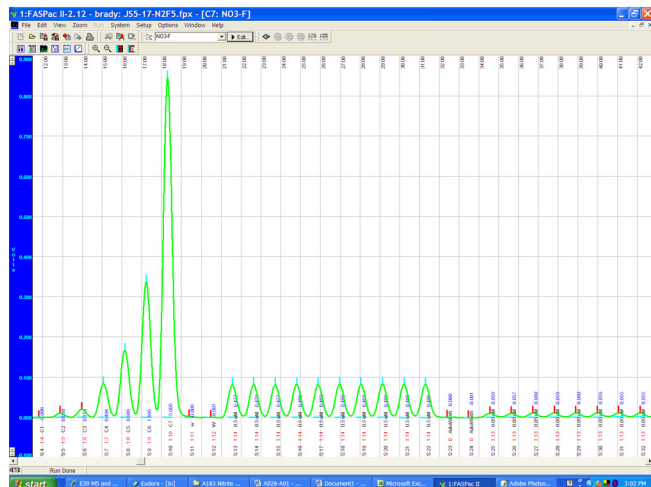
# Nitrate+Nitrite in Seawater/Brakishwater

## Example 1 - Nitrate (SAN/NED) A177-A00 Range: 0.05 - 7.5 $\mu\text{M}$ (0.7 - 105 $\mu\text{g/L}$ )



**Nitrate A177-A00**  
Range: 0.05 - 7.5  $\mu\text{M}$  (as N)  
MDL=0.016  $\mu\text{M}$  (as N)  
Analysis rate: 42 samples/hour

## Example 2 - Nitrate (by Fluorometric) A179-A00 Range: 0.05 - 5 $\mu\text{M}$



**Nitrate A179-A00**  
Range: 0.05 - 5  $\mu\text{M}$  (as N)  
MDL=0.007  $\mu\text{M}$  (as N)  
Analysis rate: 55 samples/hour