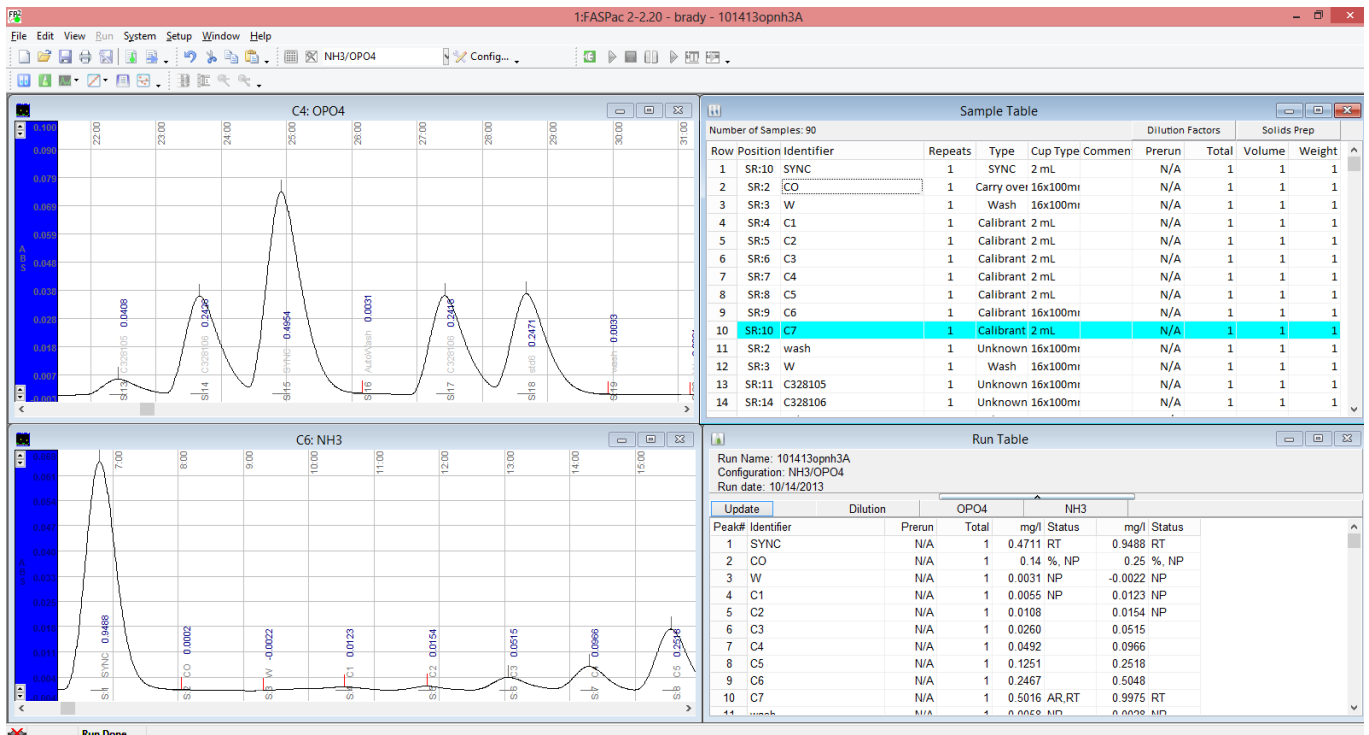


FASPac™ 2

The Flow Analyzer software you'll fall in love with



This powerful, unique Flow Analyzer Software Package (FASPac) controls, collects and processes data from up to six (6) digital channels and one (1) analog channel simultaneously. Working within the Windows environment, FASPac offers a sophisticated graphical presentation of information and data, easily customized for your needs.

ASTORIA • PACIFIC

Takes you beyond conventional performance

- Ability to recalibrate and rerun samples with or without operator intervention
- Allows samples to be added to the sample table during a run
- Allows for multiple calibration curves to be applied over expanded range
- True multitasking flexibility with Microsoft Windows (XP, Vista, 7 pro, 8 pro), allowing for simultaneous use of other applications
- Real Time display of peaks and concentration results on the computer screen
- Random access sampler (XYZ) control—if you have a 111/311 or 411 Sampler
- Allows for automatic recalibration—if you have a 312/412 diluter
- Allows for samples to be pre-diluted before run begins
- Timed events control for auto startup and shutdown of pump and detector
- Self-monitoring system detects out of calibration condition, off-scale condition
- User-defined report formatting allowing for customizable reports
- Ability to copy graphics to the clipboard to include in reports
- Customizable headers/footers with easy-to-use MACROS
- Process data from a previous run while another run is in progress
- Reports can be saved and exported directly as Excel™, Lotus™ or text files
- Easily integrated with LIMS for import or export of data and results
- Spreadsheet style sample table entry and editing
- Supports EPA CLP protocol
- Built-in QC charting of data, providing X and R charts
- Automatically corrects for baseline drift, sensitivity drift and carryover
- User-defined peak search parameters and editing of peak markers to provide full control over peak analysis
- No invasion of your PC hardware; no expansion slot required; 100% external hookup

Figure 3. Easy-to-read Calibration window

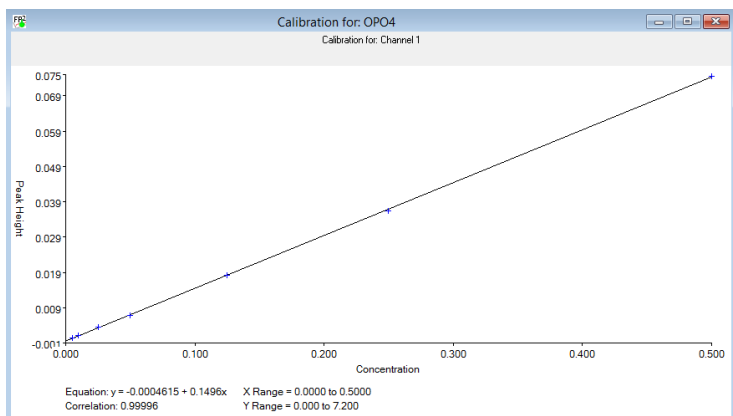


Figure 4. Fast setup of parameters of Methods

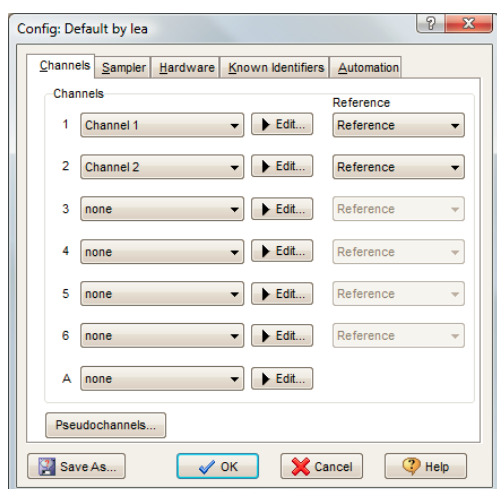
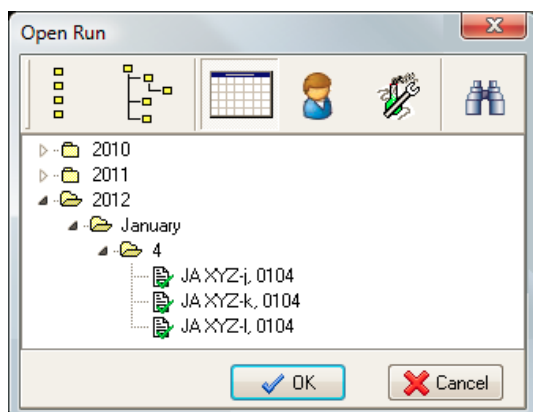


Figure 5. Raw data is preserved in a convenient, easy-to-navigate database. Data cannot be removed unless deleted via the database manager



FASPac is easy-to-use. Navigate through various software operations with convenient pop-up graphics. Verify, Calibration, Configuration/Method setup, Method parameters, and Data import/export options with a quick “click”

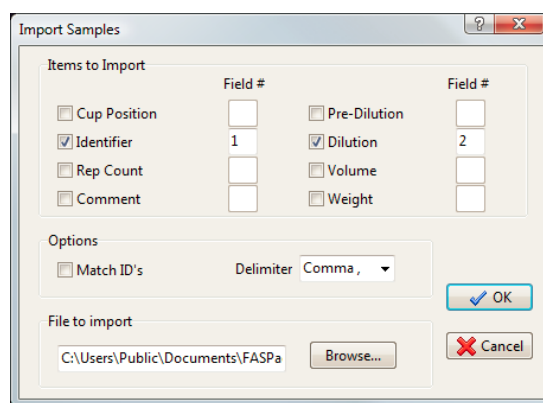
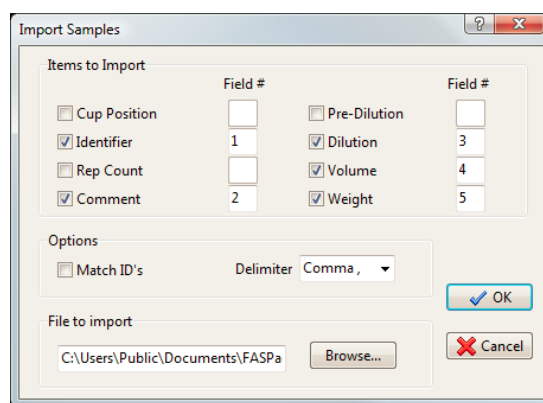


Figure 6. Import samples form Excel or LIMS and, Figure 7, customize what is imported



The graphical display is customizable: Color selection of trace, font and other info; what data are to be displayed on the graph and Run Table/Report; information in Headers/Footers; and etc.

ASTORIA • PACIFIC

Figure 8. Built-In QC, providing X and R Charts

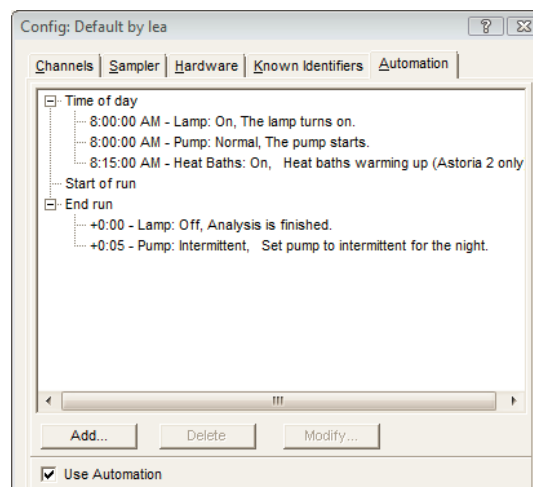
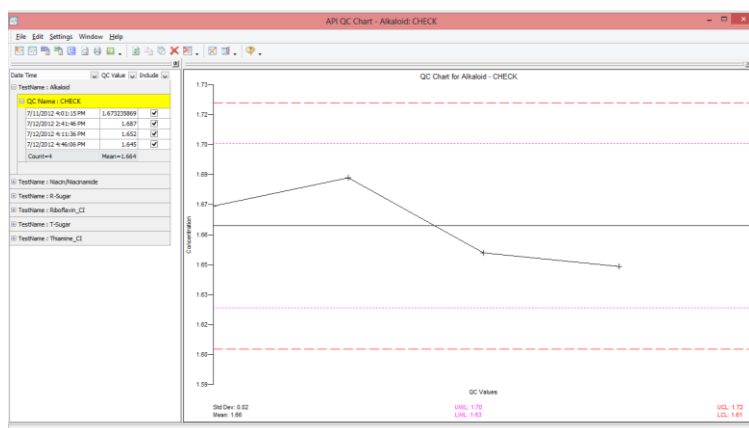


Figure 9. “Calibration Wizard,” with the optional diluter module, allows the user to prepare online calibrants/standards from a single stock standard

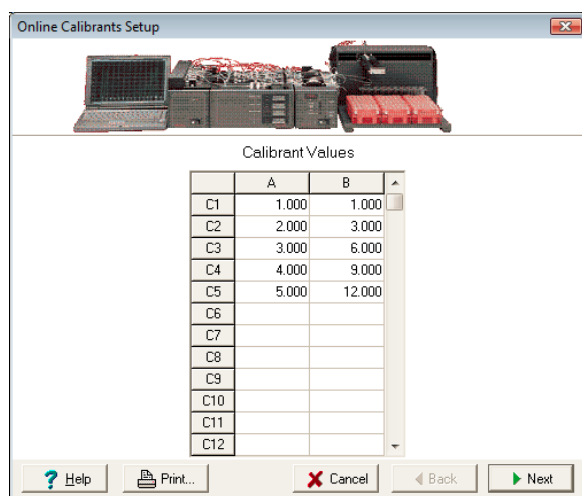
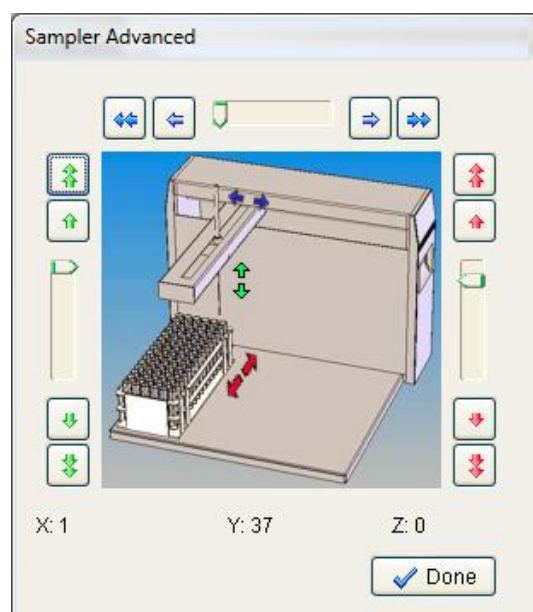


Figure 10. The “Time-events” feature allows the operator to automatically trigger events—such as “Lamp On”, “Pump off,” etc.—when the operator is away from the system

Figure 11. Easy-access system tools—such as Rack Wizard—provides invaluable alignment/system tools without separate diagnostic software



FASPac2 is an extremely versatile and powerful tool. Although developed for the Astoria Analyzer, it can be connected to AAll and other older systems, thereby saving costs while increasing productivity.

Contact an Astoria-Pacific representative to discuss the advantages of the FASPac2 platform for your laboratory