

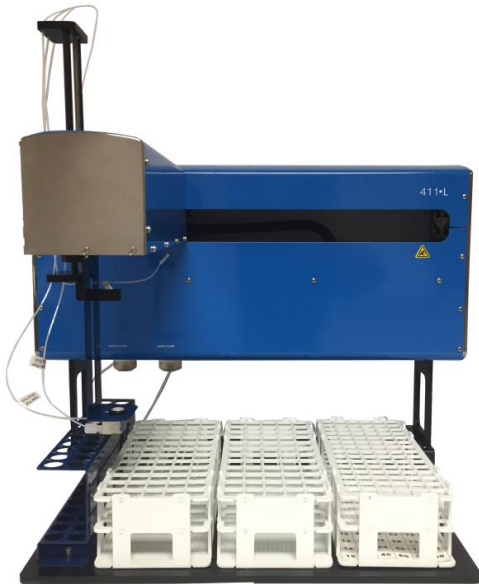
ASTORIA • PACIFIC

Automated Wet-Chemistry Analyzers and Diagnostic Reagents



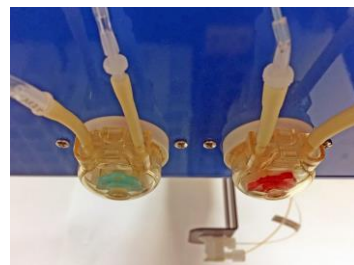
411L XYZ SAMPLER

411L – XYZ SAMPLER



The 411L incorporates precision, durability and advanced robotics. Designed for medium to high sample capacity applications, the 411L includes:

- XYZ sampling format, allowing for recalibration and automatic insertion of check calibrant(s)
- Probe accuracy of +/- 0.1mm
- Separate Standards Rack, which holds up to 24 calibrants or control samples
- Space for up to three 60- or 90-place Sample Racks, utilizing various cup and test-tube types
- Continuous sample load feature (via FASPac 2.4) for extended run times
- Easy setup, which allows for fast setup and operation upon delivery
- Operational and safety LED lighting for quick operator visual reference
- Optional Interface with Dilutus (412 Dilution Module)
- Traveling Wash Pot (TWP) with built-in rinse pump, which minimizes sample contamination and carryover (see images below)



ASTORIA • PACIFIC

411L + 412 DILUTUS

Add the optional 412 Dilutus to the 411L for increased productivity:

- 5X to 100X dilution factors. Operators enter in increments of 5
- Operator can dilute samples prior to the run, and assign different dilution factors for each sample
- User assigns dilution parameters for off-scale / above-range samples
- Autocalibration from a single stock standard or mixed stock



411L HARDWARE SPECIFICATIONS

1. Power

- a. Voltage Range: 90 – 260 Volts
- b. Line Frequency: 50/60 Hertz

2. Physical Dimensions

- a. Height: 20.0 inches (50.8 cm)
- b. Depth: 16.0 inches (40.6 cm)
- c. Width: 21.2 inches (53.8 cm)
- d. Weight: 28.0 pounds (12.7 kg)

3. Operating Software: FASPac 2.4

4. Hardware Compatibility: Astoria2, 305D*, 307

*NOTE: Not all 305Ds will be compatible. Check with Astoria-Pacific for serial number compatibility.